



blaine memorial
UNITED METHODIST CHURCH

SUNDAY
August 6, 2023

Worship

Sing Praises with Blaine!
3 | Order of Worship
7 | Community Prayers
8 | Kubota Garden Walk



Come, let us gather us together
Let us join the gathering: we bring fins and feathers!
Come, all is ready for all of creation.
Let us join the gathering: we bring scales and fur!
Come let us praise our Creator.
We are loved: we bring skin!
Come, with fins, feathers, scales, fur and skin. **Amen!**



3001 24th Avenue South • Seattle, WA 98144 • (206) 723-1536
blaineonline.org • blaineoffice@yahoo.com
Instagram: [@blaineumc_seattle](https://www.instagram.com/blaineumc_seattle) • onrealm.org/blai

Worship with Blaine!

(206) 723-1536 • blaineonline.org • Instagram: [@blaineumc_seattle](https://www.instagram.com/blaineumc_seattle) • onrealm.org/blainememorial

All are Welcome Here!

Our core belief is that each person is a beloved child of God - whose giftedness we value and whose presence and participation are a blessing to our community, and to the Kin-dom of God in the world.

Blaine Memorial United Methodist Church affirms our core value of Radical Hospitality, and as a community, we are an inclusive Church that welcomes and extends every part of its ministry to all persons regardless of race, ethnicity, income, age, generation, political affiliation, theological stance, sexual orientation or gender identity.



Ministry Staff Team & Worship Celebrants

Senior Pastor
Associate Pastor
Choir Director
Pianist
Technical Production Support

Director, B.Y.G.
Associate Directors, B.Y.G.

Church School Superintendent
Office Assistant
Bookkeeper

Lay Leadership Team

Administrative Board
Ad-Board Vice-Chair
Staff Parish Relations
SPRC Vice-Chair
Board of Trustees
Finance Committee
Lay Leaders
Annual Conference Delegates

Ways to Give

- **ONLINE:** Click the Realm logo at blaineonline.org or scan the QR code on the right.
- **MOBILE:** Download the free "Realm Connect" app. Use your sign-in and click GIVING.
- **TEXT:** Text BLAINE to 73256. Click the link and follow the prompts.
- **MAIL:** Mail checks to: BMUMC at 3001 24th Ave S. Seattle, WA 98144.

Rev. Karen Yokota Love
Rev. Mia MiKyung Park
Eugene Onishi
Kathy Onishi
Ron Nobuyama, Marina Kozu,
Jarrett Shirouzu, Rachel Ono-Lim, David Akiyama,
Kai Yamamoto
Lynne Onishi
Kai Yamamoto
Kaylee Yokoyama
Sai Hanaoka
Yuki Sofronas
Mimi Mar



Brad Miyake
Lisa Mar
Sally Sekijima
Arlene Naganawa
Ron Nobuyama, Brian Okura
Bob Sekijima, Gayle Miyake
Eugene Onishi, Kathy Onishi
Ron Nobuyama, George Yates



Tenth Sunday after Pentecost
Hybrid Worship • Blaine Courtyard
August 6, 2023

Holy Communion
Rev. Karen Yokota Love
Rev. Mia MiKyung Park
Rev. Dr. Jeney Park-Hearn

Prelude
As The Deer
Martin J. Nystrom
Kathy Onishi

Blessing of the Animals
Rev. Karen Yokota Love
Rev. Mia MiKyung Park
Rev. Dr. Jeney Park-Hearn

Welcome of Grace and Greeting
Rev. Dr. Jeney Park-Hearn

Introduction to the Offering
Rev. Mia MiKyung Park

***Call to Worship** (see cover)
***Opening Prayer**
Rev. Dr. Jeney Park-Hearn

***Doxology**
Praise God, from Whom All Blessings Flow
(UMH #94)
Eugene and Kathy Onishi

***Opening Hymn**
Morning Has Broken
UMH #145 (Lyrics on Page 4)
Kathy Onishi

Prayer of Dedication
Rev. Mia MiKyung Park

First Scripture Reading
Matthew 14:13-21 (NRSVUE)
マタイの福音書 14:13-21 (JLB)
Arlene Naganawa, Tsutomu Nagoya

Announcements
Rev. Karen Yokota Love

Children's Message
Rev. Mia MiKyung Park

***Closing Hymn**
Make Me a Channel of Your Peace
TFWS #2171 (Lyrics on Page 5)
Kathy Onishi

Second Scripture
Job 12:7-10 (CEB)
ヨブ記 12:7-10 (JLB)
Arlene Naganawa, Tsutomu Nagoya

***Benediction**
Rev. Karen Yokota Love

Homily
Animal Love
Rev. Karen Yokota Love

Postlude
May You Run and Not Be Weary
Paul Murakami and Handt Hanson
Kathy Onishi

Morning Has Broken

145

Unison

C Am Dm G F C

1. Morn-ing has bro - ken like the first morn - ing;
 2. Sweet the rain's new fall sun - lit from heav - en,
 3. Mine is the sun - light! Mine is the morn - ing

Am Em/G F Em Dm G

black-bird has spo - ken like the first bird.
 like the first dew - fall on the first grass.
 born of the one light E - den saw play!

C F C Am Dm/F

Praise for the sing - ing! Praise for the morn - ing!
 Praise for the sweet - ness of the wet gar - den,
 Praise with e - la - tion, praise ev - ery morn - ing,

D7/F# C/G F G7 C

Praise for them, spring - ing fresh from the Word!
 sprung in com - plete - ness where his feet pass.
 God's re - cre - a - tion of the new day!

WORDS: Eleanor Farjeon, 1931 (Lam. 3:22-23)

MUSIC: Trad. Gaelic melody; harm. by Carlton R. Young, 1988

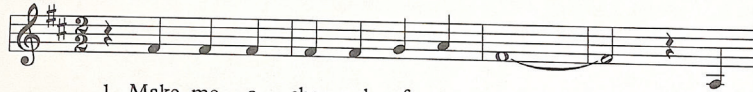
BUNESSAN

55.54 D

Words by permission of David Higham Associates, Ltd.; harm. © 1989 The United Methodist Publishing House

GRACE

2171 Make Me a Channel of Your Peace



1. Make me a chan-nel of your peace. _____ Where
2. Make me a chan-nel of your peace. _____ Where
4. Make me a chan-nel of your peace. _____ It



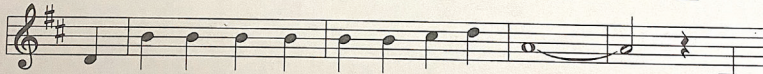
there is ha-tred, let me bring your love. _____ Where
there's de-spair in life, let me bring hope. _____ Where
is in par-don-ing that we are par-doned, _____ in



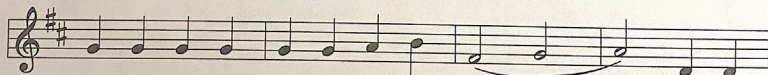
there is in-ju-ry, your par-don, Lord, _____ and
there is dark-ness, _____ on-ly light, _____ and
giv-ing of our-selves that we re-ceive, _____ and in



where there's doubt, true faith in you. _____
where there's sad-ness, ev-er joy. _____
dy-ing that we're born to e-ter-nal life. _____



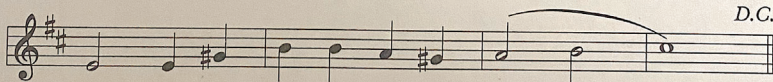
3. Oh, Mas-ter, grant that I may nev-er seek _____ so



much to be con-soled as to con-sole, _____ to be



un-der-stood as to un-der-stand, _____ to be



love as to love with all my soul. _____

WORDS: *Prayer of St. Francis*; adapt. by Sebastian Temple (Matt. 6:12-15)
MUSIC: Sebastian Temple

CHANNEL OF PEACE
Irregular

© 1967 OCP Publications

Save the date

Blaine Memorial UMC's

Bazaar

...is back!

October 7, 2023 | 11am-5pm

Come join us for some homemade Japanese food!

BBQ Chicken • Curry • Udon • Homemade Pies • Baked Goods

Check out our Farmers Market!

Produce • Plants

More details to come!

Please contact Lesley Okura with questions!



In Our Thoughts and Prayers

As a Church and people who believe in the power of prayer, let us continue to lift up these persons in the joys and concerns that they are experiencing in their lives.

Those mourning the passing of loved ones

- **George Aoyama**, 96, passed away on April 12, 2023. He is survived by his sister, Anne Moriyasu; daughters, Cindy (Gary) Shimizu, Tami McClincy and Lori Ricord; grandchildren, Drew and Alec Shimizu and Lorissa and Logan Ricord. George grew up in Seattle as a teen and his family was incarcerated at Camp Harmony in Puyallup, and later sent to the Minidoka concentration camp in Idaho during World War II. As a youth and young adult, George played baseball, and later enjoyed bowling at Imperial Lanes in Seattle. He was an avid golfer, a member of the Bayview Nisei Golf Club, and a member of the Nisei Veterans Committee. George served in the U.S. military and was honorably discharged in 1947. George worked in the shipping industry, first for C.T. Takahashi & Co and later retired from Mitsui & Co. George will be greatly missed by family and friends.
- **Shizue Watanabe**, 98, passed away peacefully at Valley Medical Hospital and she was surrounded by her children on Thursday, July 13, 2023. Shizue is survived by her children, Judy Yasutake (Bruce), Glen (Jody), Wendell, Sharon, and Dale (Bif); four grandchildren: Curtis (Joline), Ben, Lucas and Hannah. Shizue was predeceased by her husband, Bill. Shizue enjoyed Minyo dancing, crafting, playing games like “Go Fish” and Hanafuda. She loved her cats and anything that was cat-related. She also loved her family with all her heart. Shizue also was a Tuesday Lady. **A public Celebration of Life service will be at Blaine Memorial UMC on Saturday, August 26, 2023 at 1:30pm.**
- **Tami Mitsui**, 93, passed away peacefully at her home in Renton, WA, on Thursday, July 13, 2023. Tami was surrounded by her loving family. She is survived by her children, Nancy Fredrick, Jan Davis, Mark Mitsui (Melanie) and Glenn Mitsui (Arlene); seven grandchildren and two great-grandchildren. She was predeceased by her husband, Sam, in 2019. Tami ran several marathons when she was in her 60s. She ran with Sam throughout her life. A Celebration of Life service and reception was yesterday, August 5, 2023 at Blaine Memorial UMC.

Those in cancer treatment or remission

- **Quy Phi • Nikki Palmer • Linda Perry • Doris Fraley • KT Aegerter • Chuck Sitkin • Dean Tsuchida**

Those in nursing homes or care facilities

- **Dorothy Akiyama**

Those with health concerns, recovery

- **Madison Kelly**, niece of Michael and Elaine Chin
- **Greg Ogata • Suma Yagi • Wyman Martin**
- **Marcia Takahashi • Rev. Shigeharu Ago**

Celebrations

- Congratulations to all who are celebrating **August birthdays and anniversaries!**

For our United Methodist Church

- We continue to pray for the safety of our LGBTQIA+ siblings and for a just, inclusive future within The United Methodist Church. We pray that we are guided by love and the hope for a world where all people are celebrated and loved, where their rights are secured and where their sexual and gender diversity is valued.

For our community, nation, and world

- Prayers for the victims who were shot to death in Lafayette, LA; Rochester, NY; Los Angeles, CA; Chicago, IL; Muncie, IN and in many more places that we know and those places that are unknown. We pray for the families who grieve their loved ones. Our hearts are broken with pain for these senseless deaths caused by gun violence. Let our voices be raised by asking our legislators to enact gun laws to protect all in our society, especially those most vulnerable.
- Prayers for the fire victims across the country. Prayers as they rebuild and recover after the aftermath of fire season in many places.
- Prayer for our homeless siblings. We ask that you help us find ways to show compassion in a safe way. Please provide food and shelter to the homeless around the world.
- Prayers for people who are experiencing mental health challenges who are isolated, anxious and helpless. May they find peace.

Announcements



Kubota Garden Walk August 12, 8:30AM Meet at Blaine Memorial

Join the Innovation Hub for a quiet walk and some spiritual reflection! We will gather at 8:30 AM in the Blaine Memorial UMC parking lot and carpool to Kubota Garden at 9817 55th Ave S, Seattle, WA 98118 (there is limited parking on-site).

Please wear comfortable clothes and walking shoes and consider bringing a hat, sunglasses and sunscreen. If folks are hungry after the walk, we will get okazu pan at Umami Kushi afterwards. Contact Lynne Onishi with questions:
lynneonishi@gmail.com

Scan the QR code to sign up!



blaineonline.org

**Latest news • Ministry updates
Videos • Resources**

Access our latest issue of the Beacon, connect with your favorite ministries, or check out our events calendar at **blaineonline.org!**

Scan the QR code with your camera or QR app to see what's happening at Blaine Memorial UMC now!